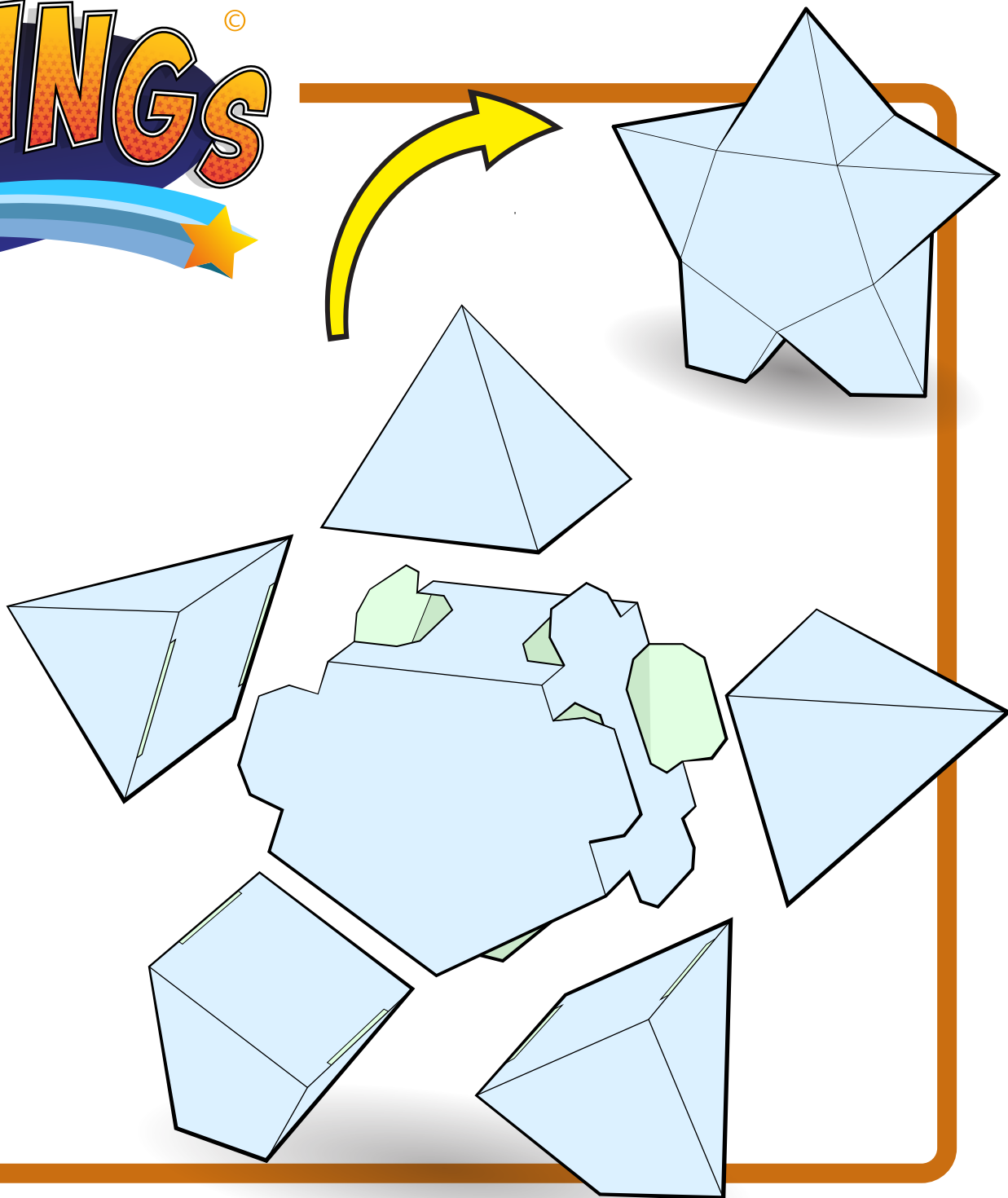


STARLINGS[©]

Starlings Papercraft is a line of print and play toys that are in the shape of stars. Each of these star figures are characters that have designs based off different themes and patterns. What makes this different from other paper toys, is after building it you can collect and assemble your own papercraft toy from the different themes presented. You can also decorate and color your own starling figure. This is one of a kind papercraft that is fully customizable and collectible.

[This PDF contains instructions on how to put together this papercraft.](#)



Materials



or

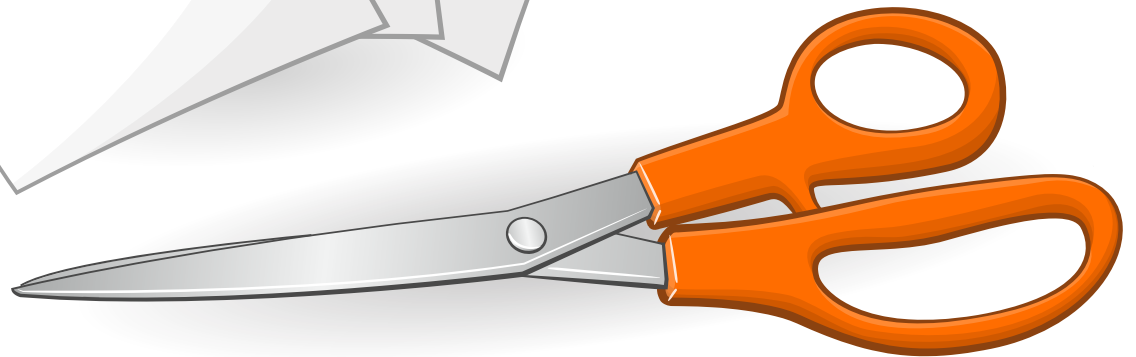


Paste Glue (Recommended)

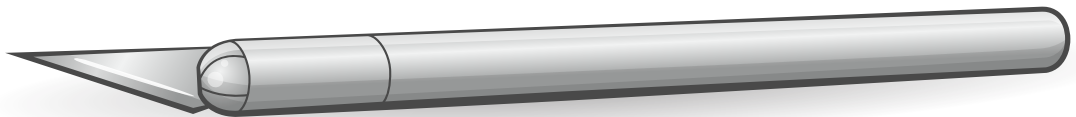
or
Glue Stick



Paper: Cardstock 67lb or thicker
Size: (A4 paper) 11"x 8.5"
(Recommended)

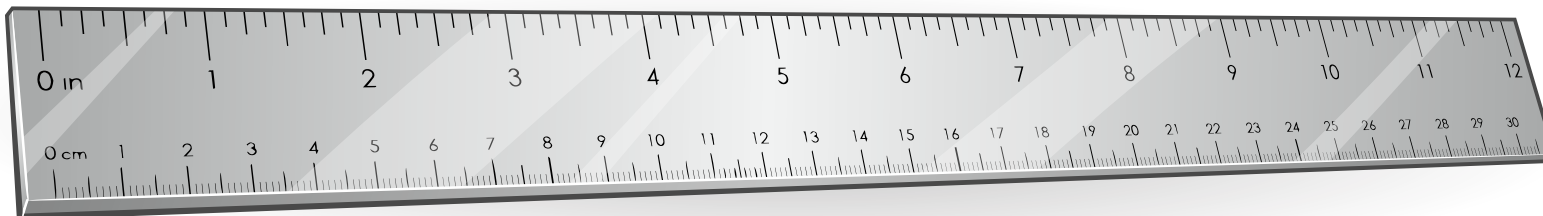


Scissors

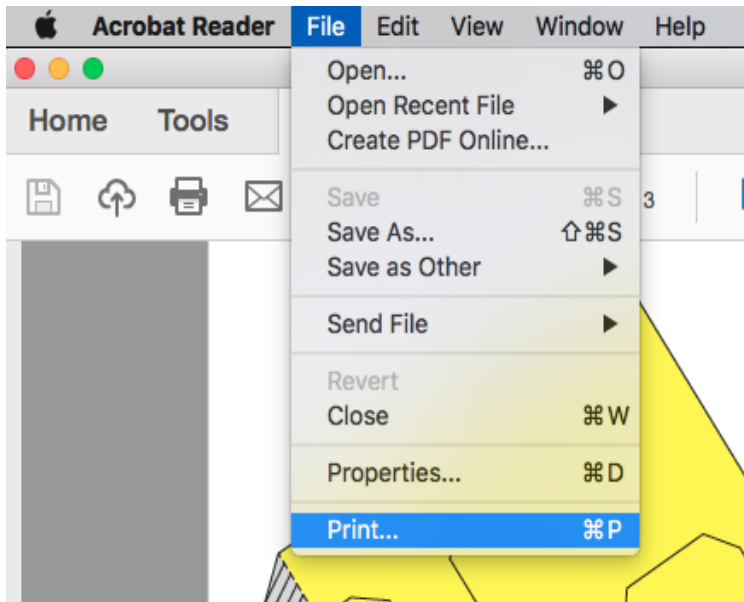


Hobby Knife

(Make sure you use a cutting mat or other protective surface when using a hobby knife)

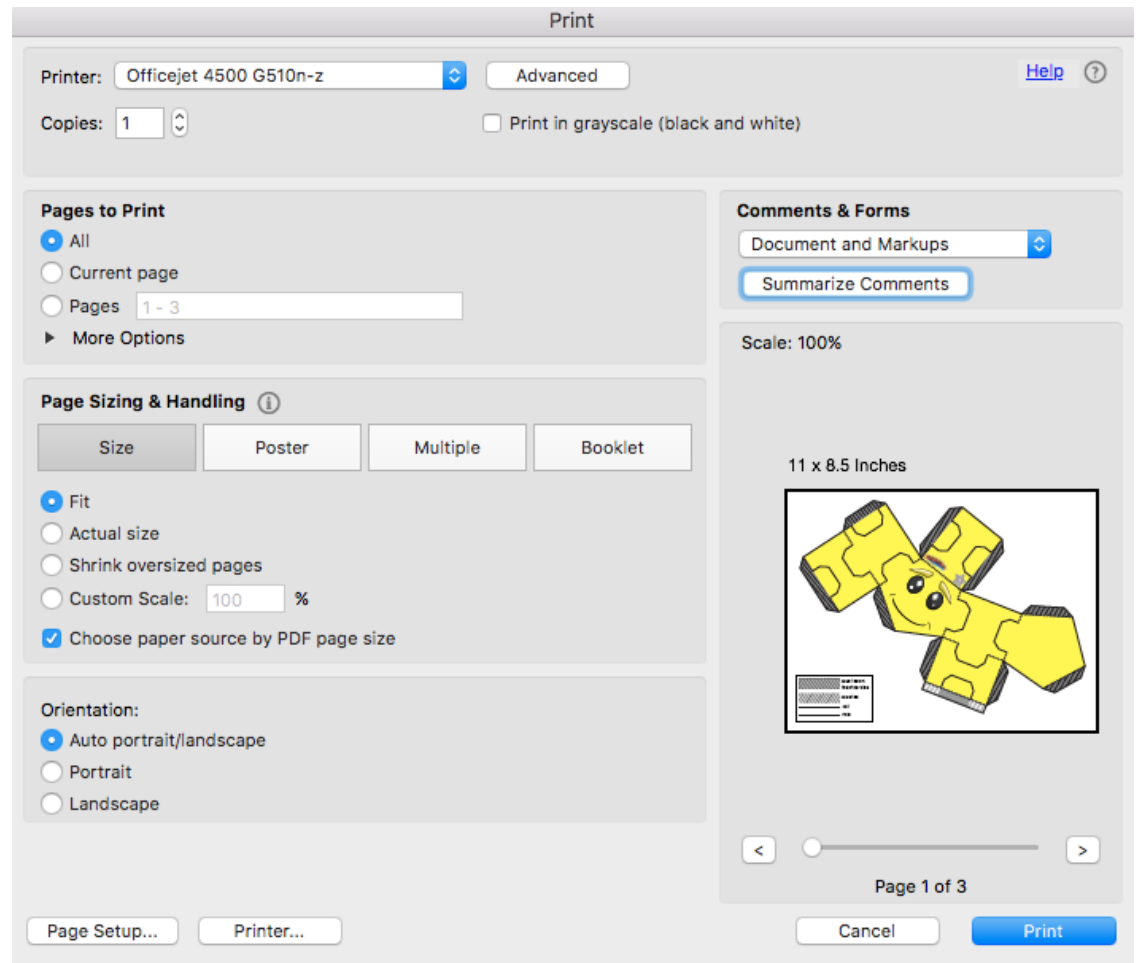


Straight Edge or Metal Ruler



To print a startling figure you will have to first choose a figure you want and download it from "josephgonzalezart.com".

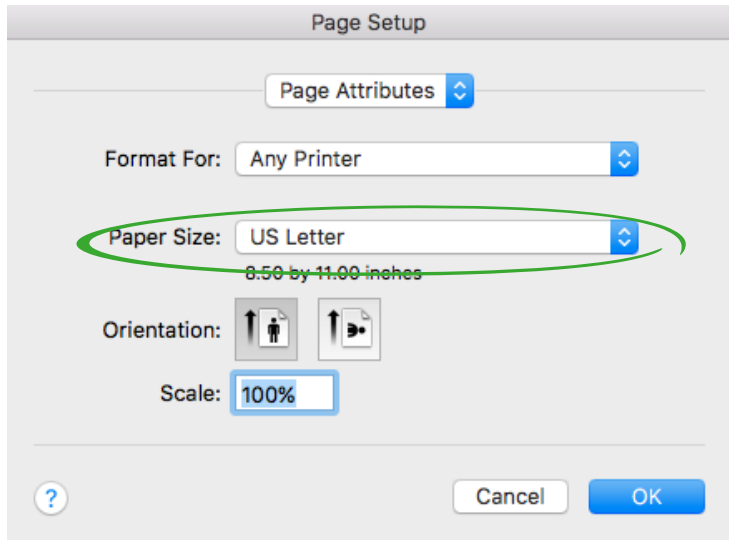
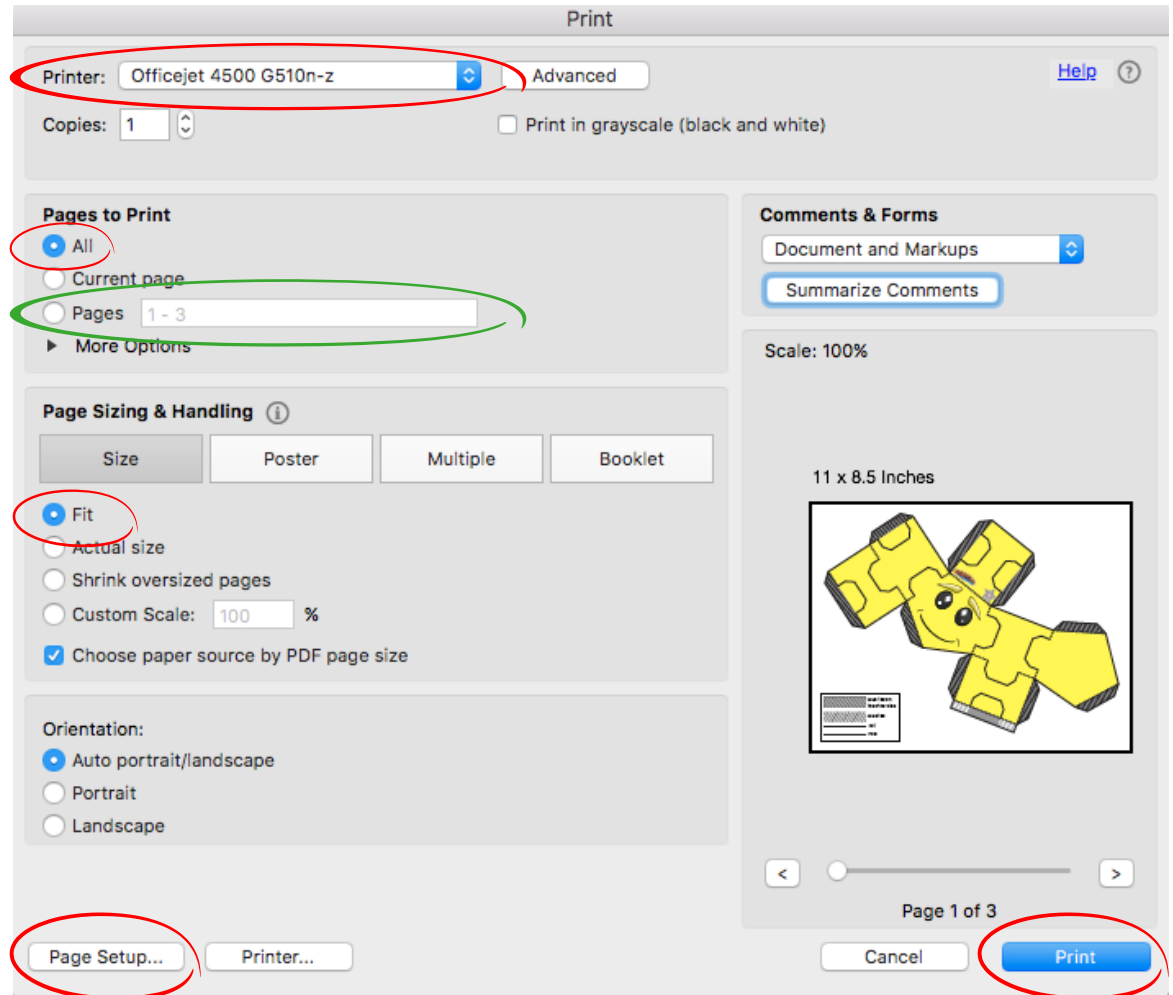
Then when you open it click on file on your upper left hand corner on your computer screen and then click print. Once you click on print a menu will pop up.



Once the menu is up make sure your printer is connected to the current computer being used.

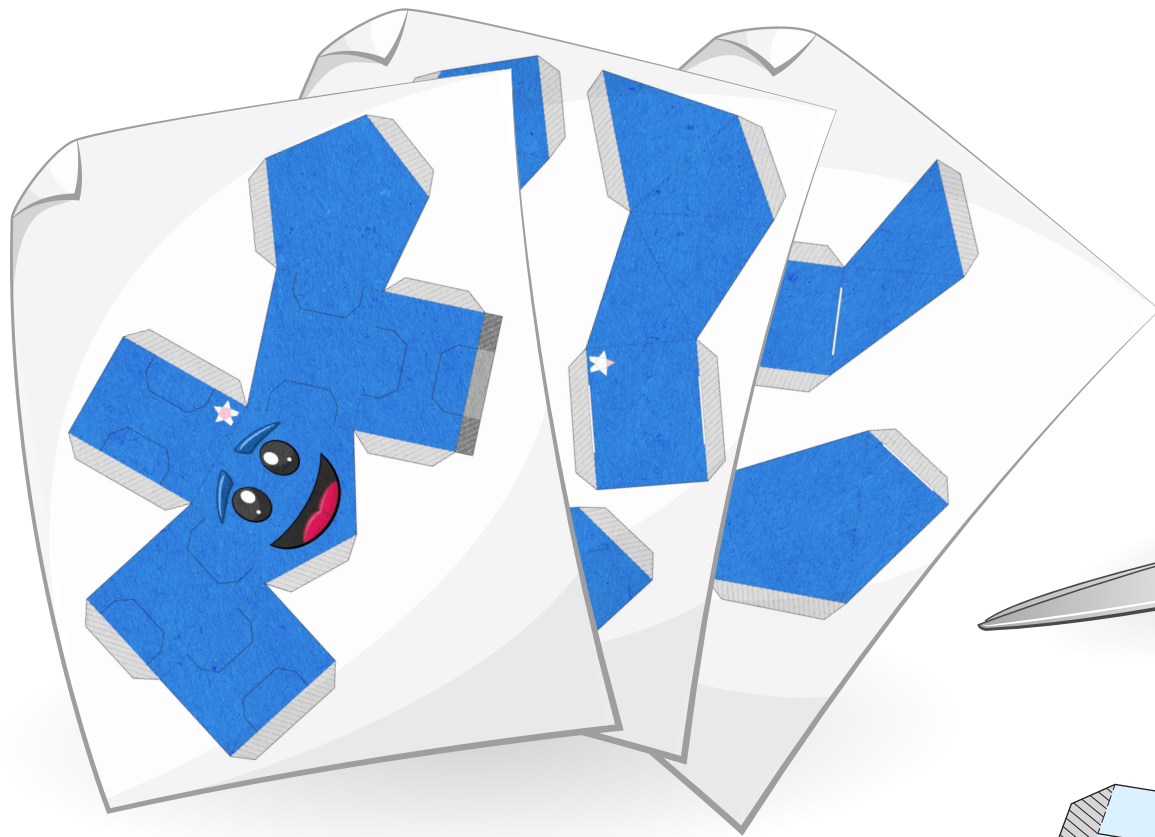
On "pages to print" select "all" or choose whichever page you're interested in printing.

On "page sizing & handling" select "fit" to make sure your starlings template doesn't get cut off.

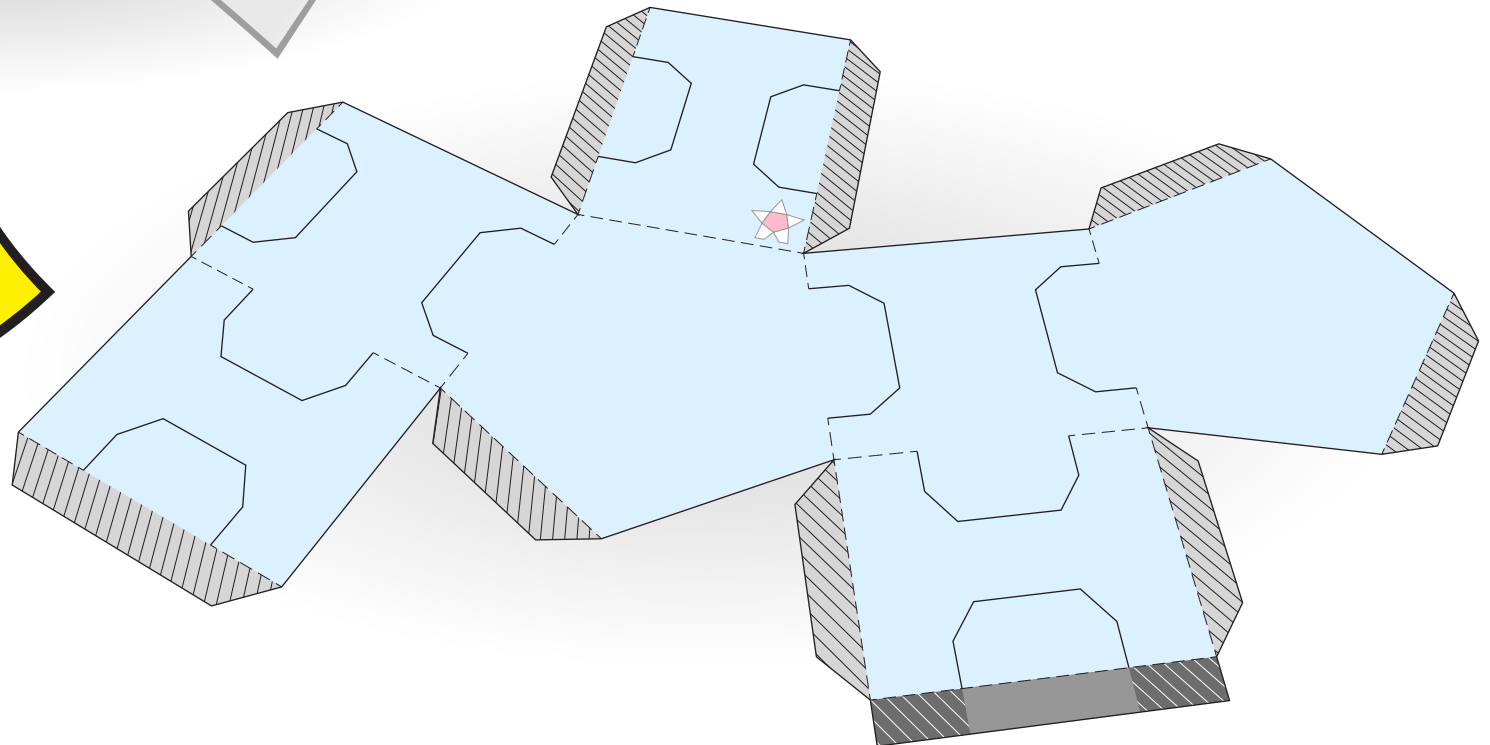
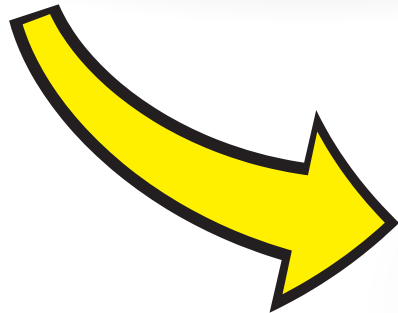
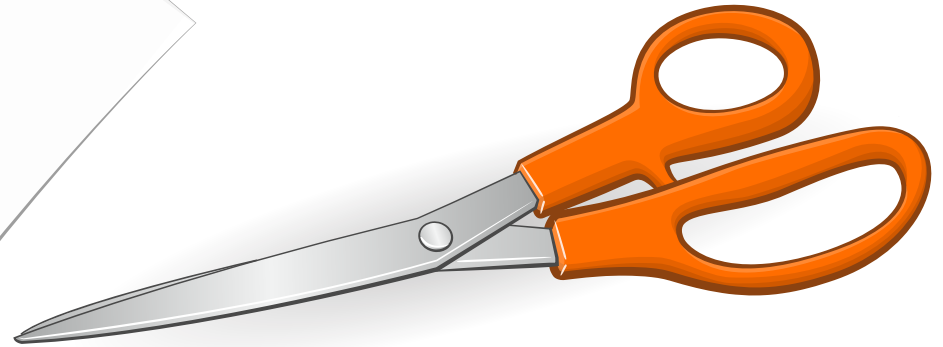


If you see in the preview box the page size isn't right or if you want to print your starling on a different size paper click on "page setup" and another menu will pop up. Click on "paper size" and select the size you want. Once you selected your size paper press ok.

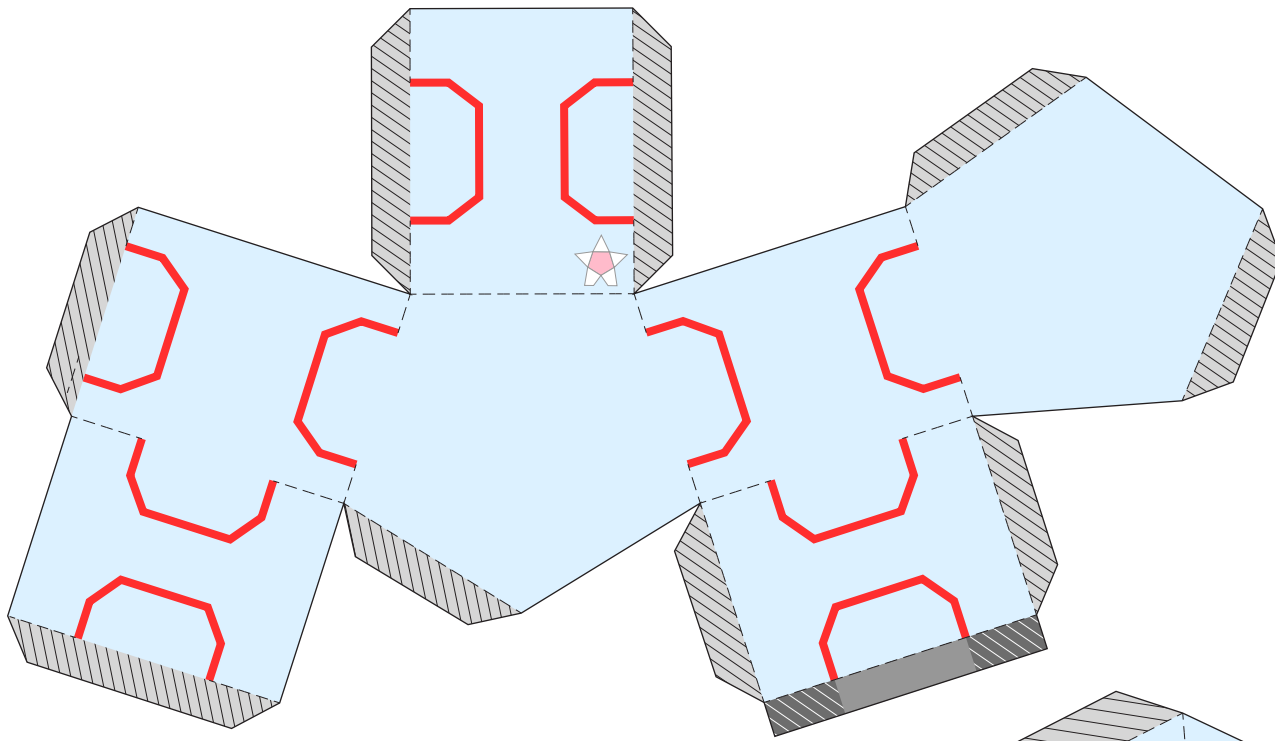
Finally double check all your settings if you see everything is ok, then click "print".



Once printed, with a responsible adult take all the printed templates and cut them out using scissors.

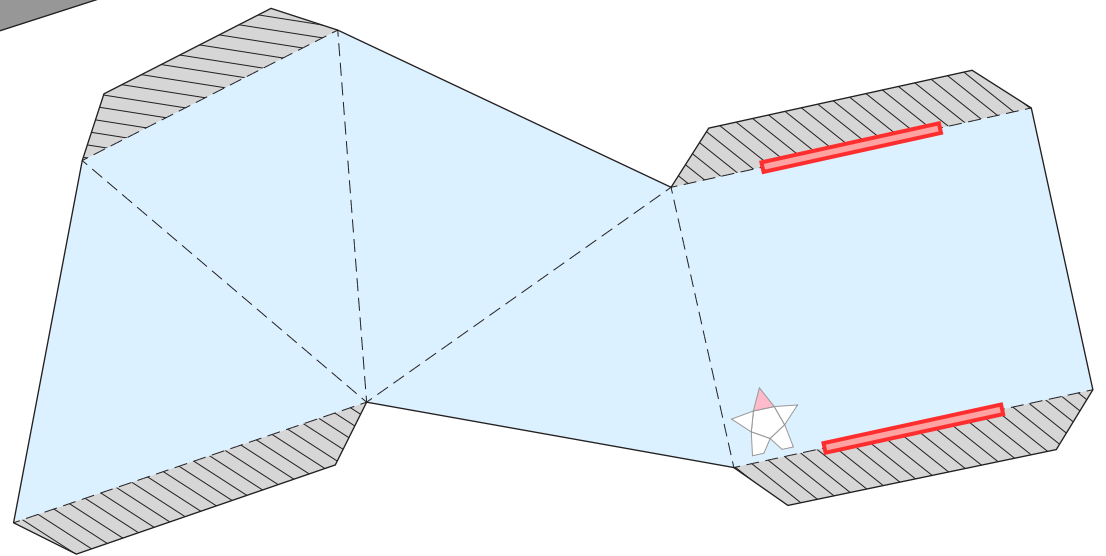
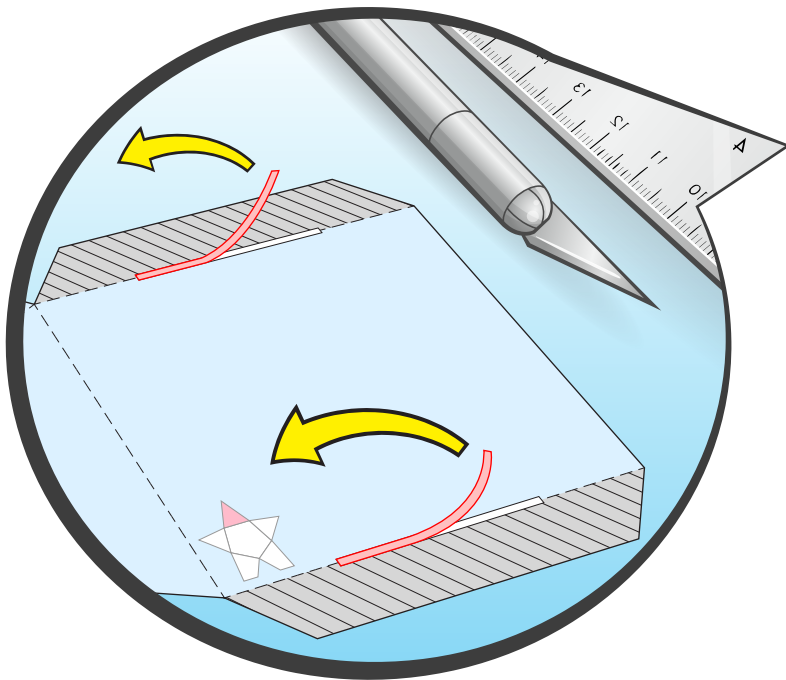


Then when all the parts are cut out move them all to the side and take the main body and lay it out on some sort of cutting mat.



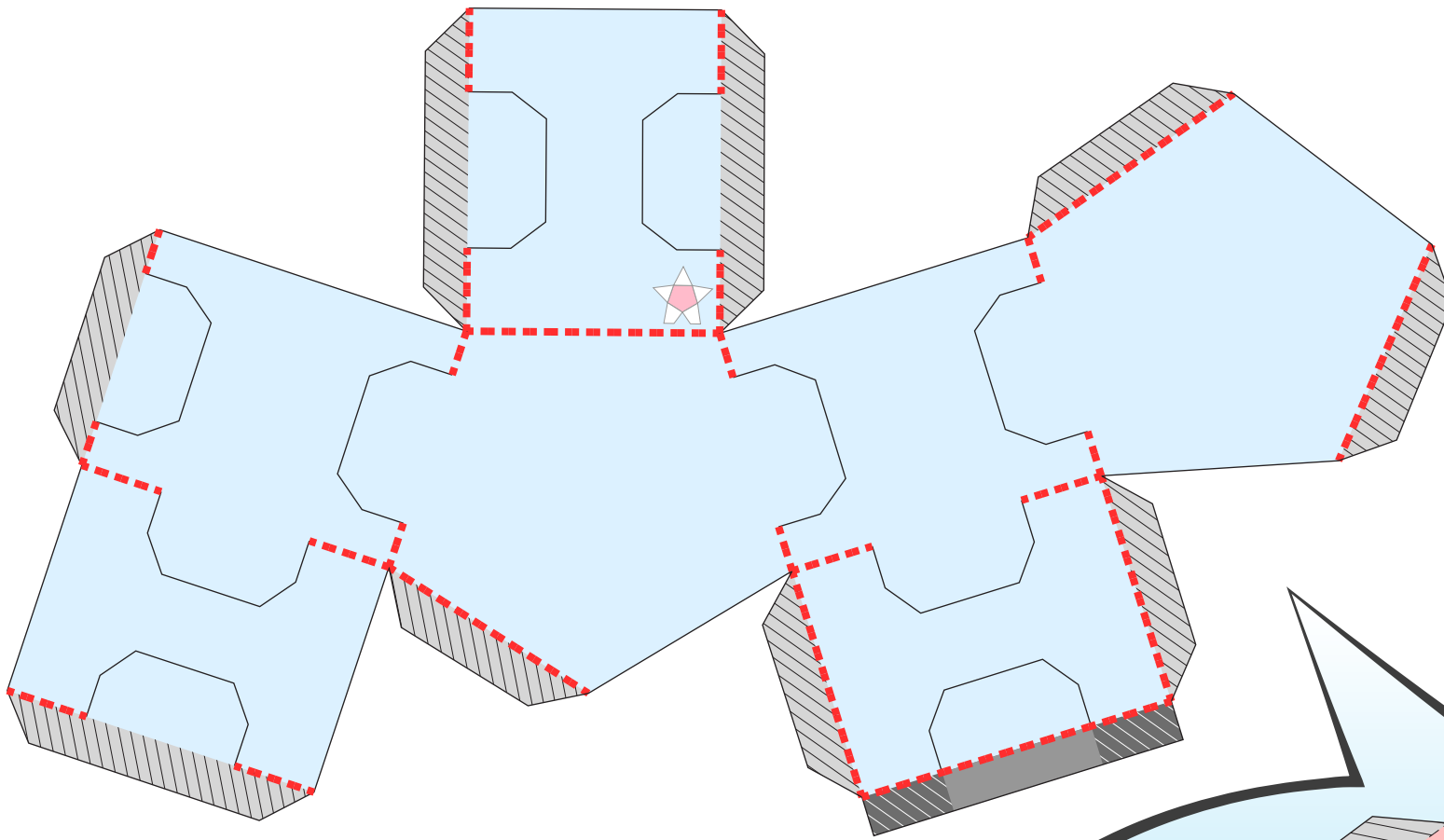
Take the center body template and with a responsible adult use the hobby knife to cut out the Inserts used to connect the body parts along the solid line.

(The parts that is needed to be cut are highlighted in a draker red)



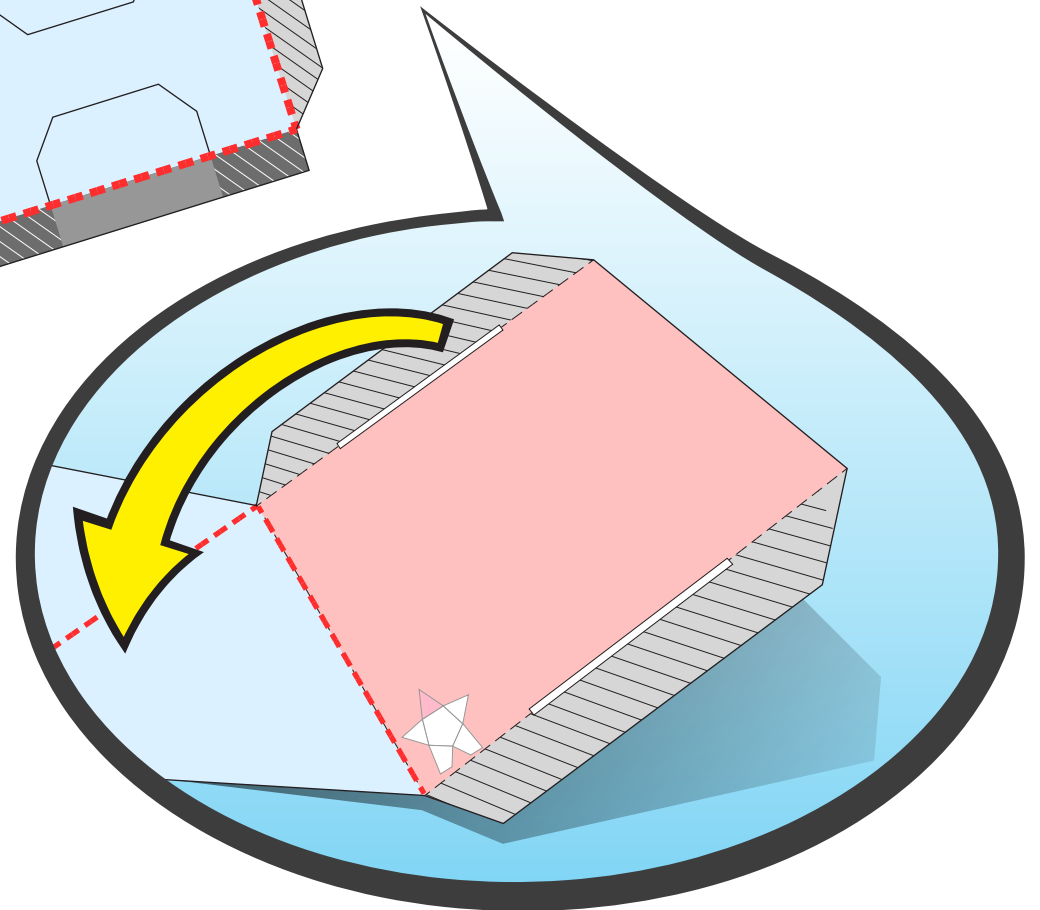
By using a hobby knife and a straight edge or metal ruler, cut out the small rectangle slots. Some of these slots are between the glue tabs and main template body of the head, arms, and legs.

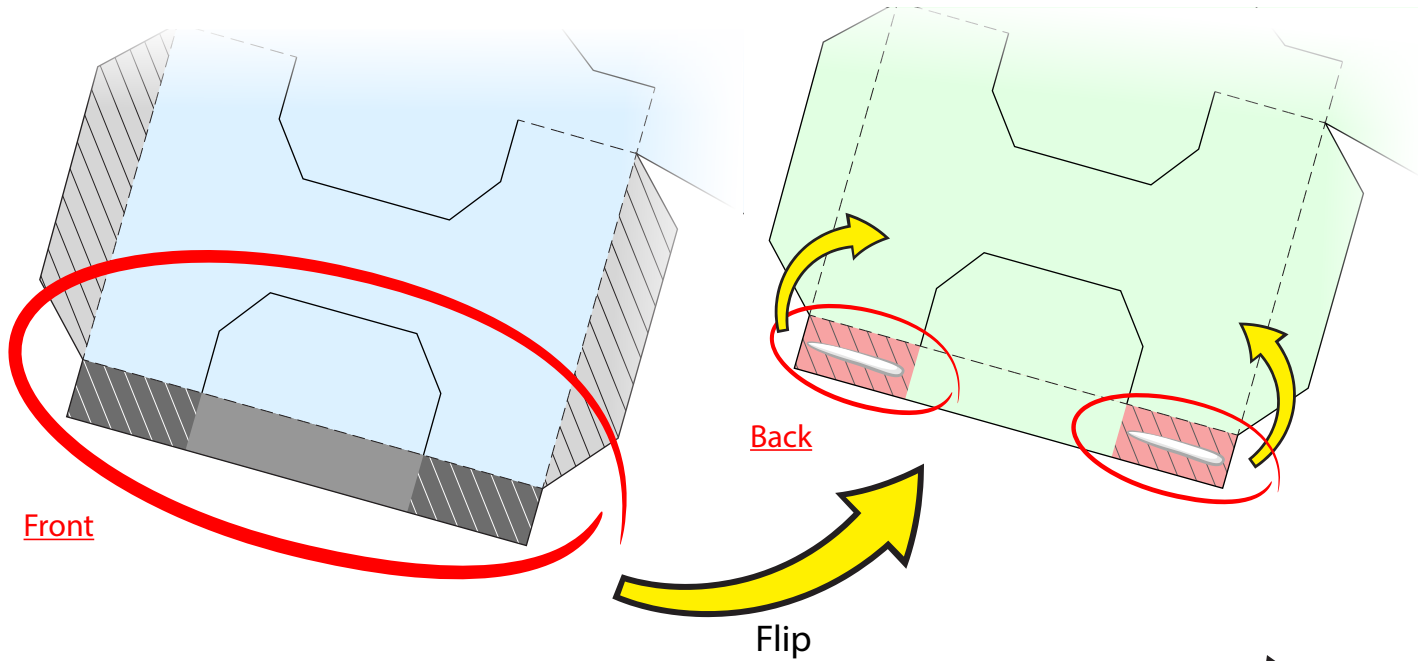
(The center body template doesn't contain any rectangle slots. The center body only contain inserts that you use to connect the head, arms, and legs.)



Then start folding along the broken lines on all the templates including the glue tabs.

(The parts that is need to be folded are highlighted in a draker red)





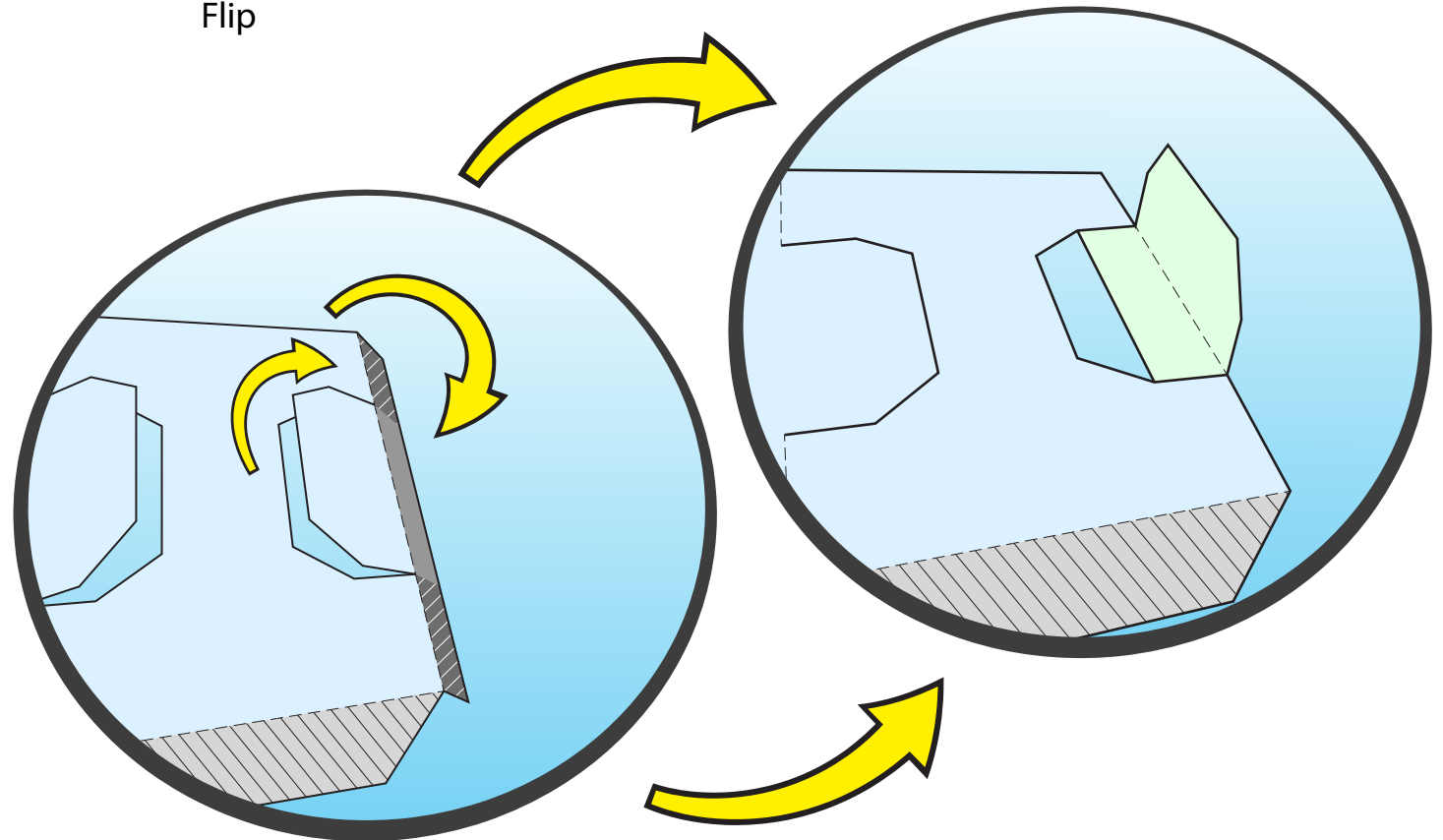
Front

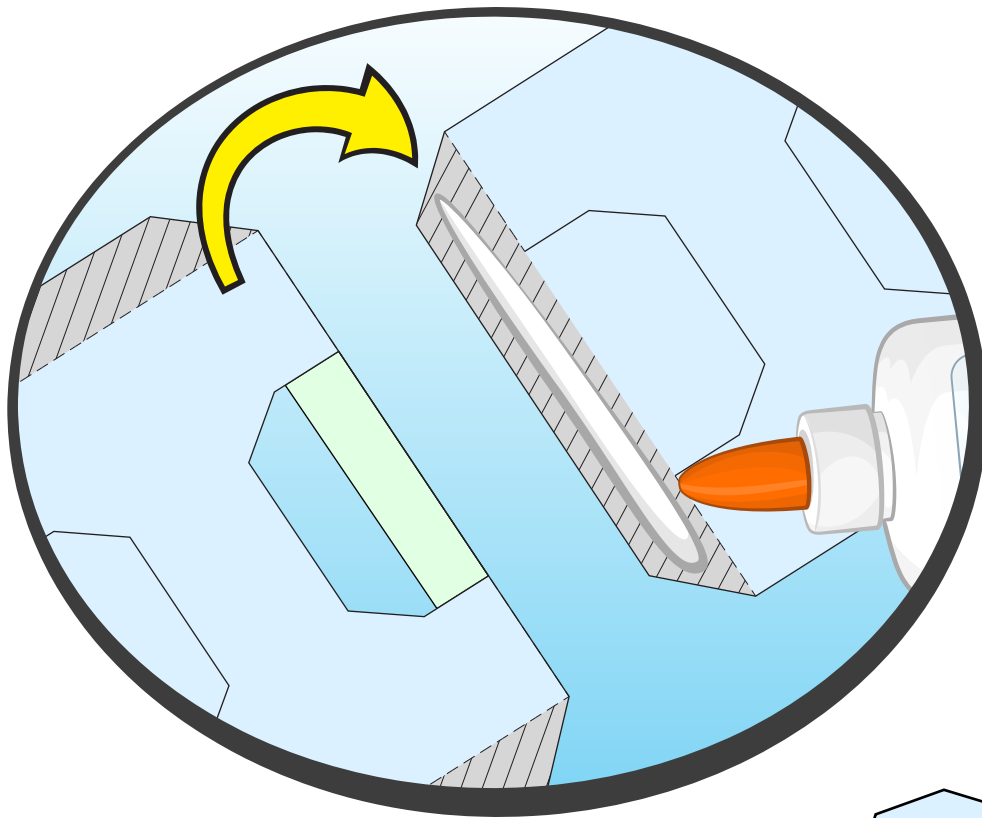
Back

Flip

Take the center body template and locate the darker gray tab. Add a little bit of glue; not on top of the tab but only on the other side of the paper. Where the darker gray parts of the tab are located keep the lighter grey center of the tab dry, leaving two lines of glue and the entire top/printed side of the tab dry.

Then finally completely fold the tab so both the unprinted sides of the tab and main body are touching each other and the insert use to connect the body parts are sticking out, untouched with glue.

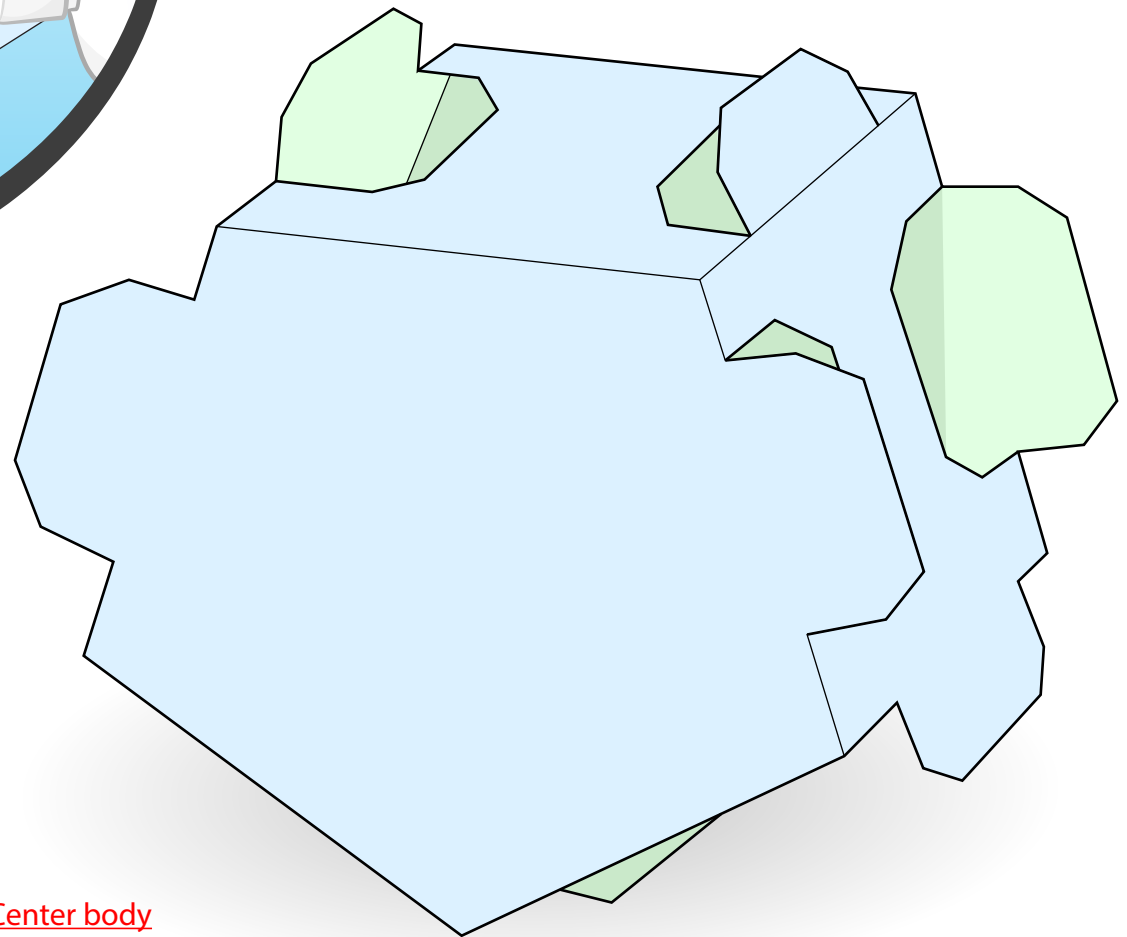




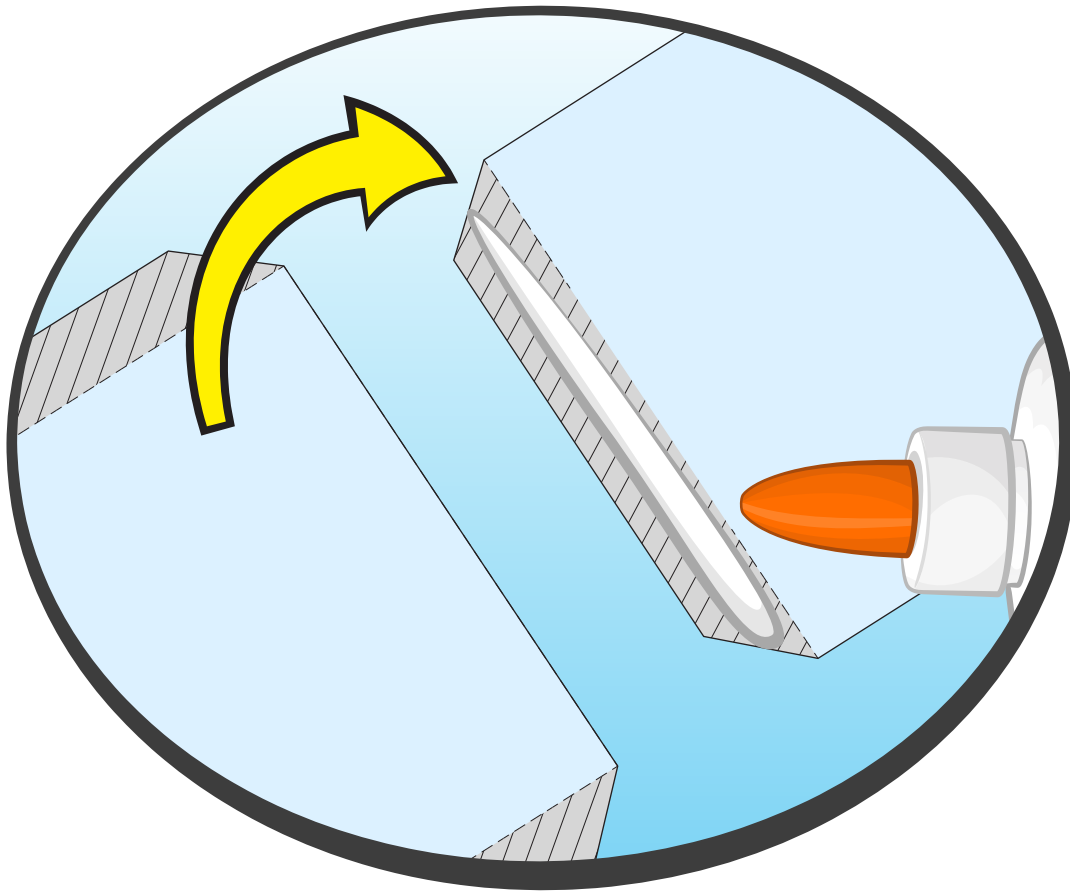
When everything is folded and or scored, add a little bit of glue on the tabs. The Panel must be attached to the tab.

Example of the last 2 steps and the center body.)

Once you glue and attach all the tabs it will create a 3-dimensonal shape that will keep its form. See the illustration as an example for the center body



Center body

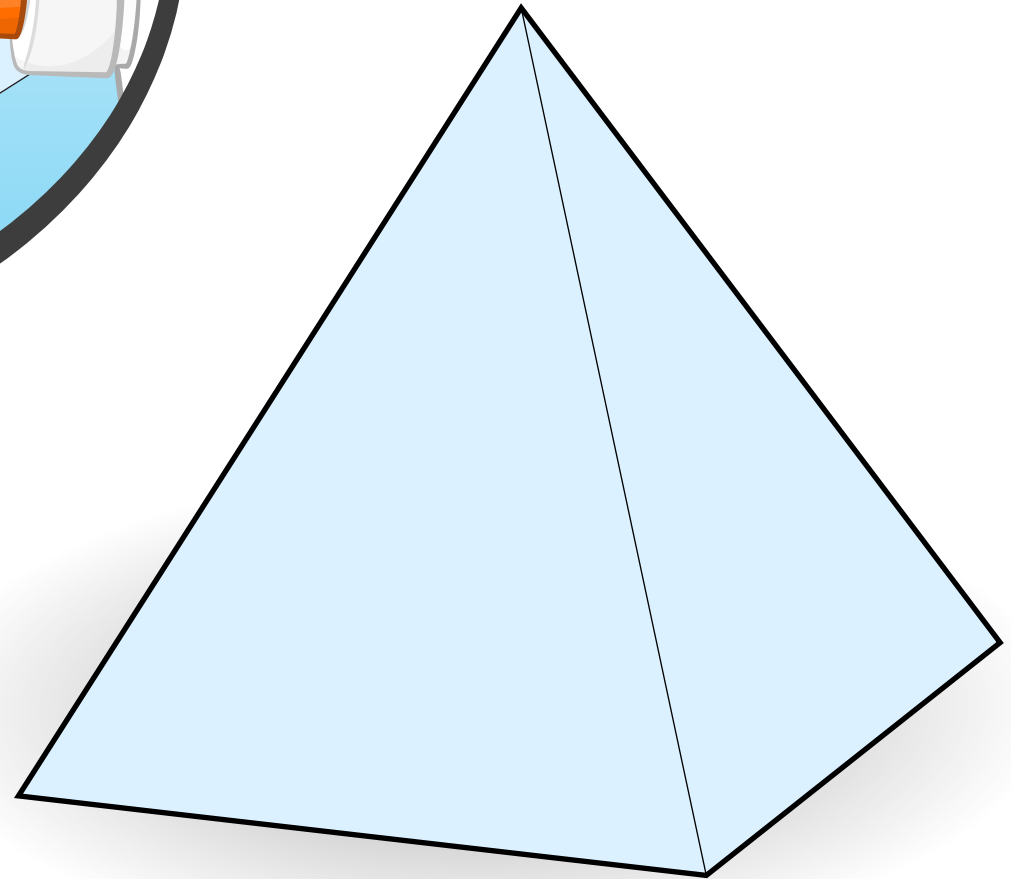


Just like the center body apply this step to all the other pieces. When everything is folded and or scored, add a little bit of glue on the tabs. The Panel must be attached to the tab.

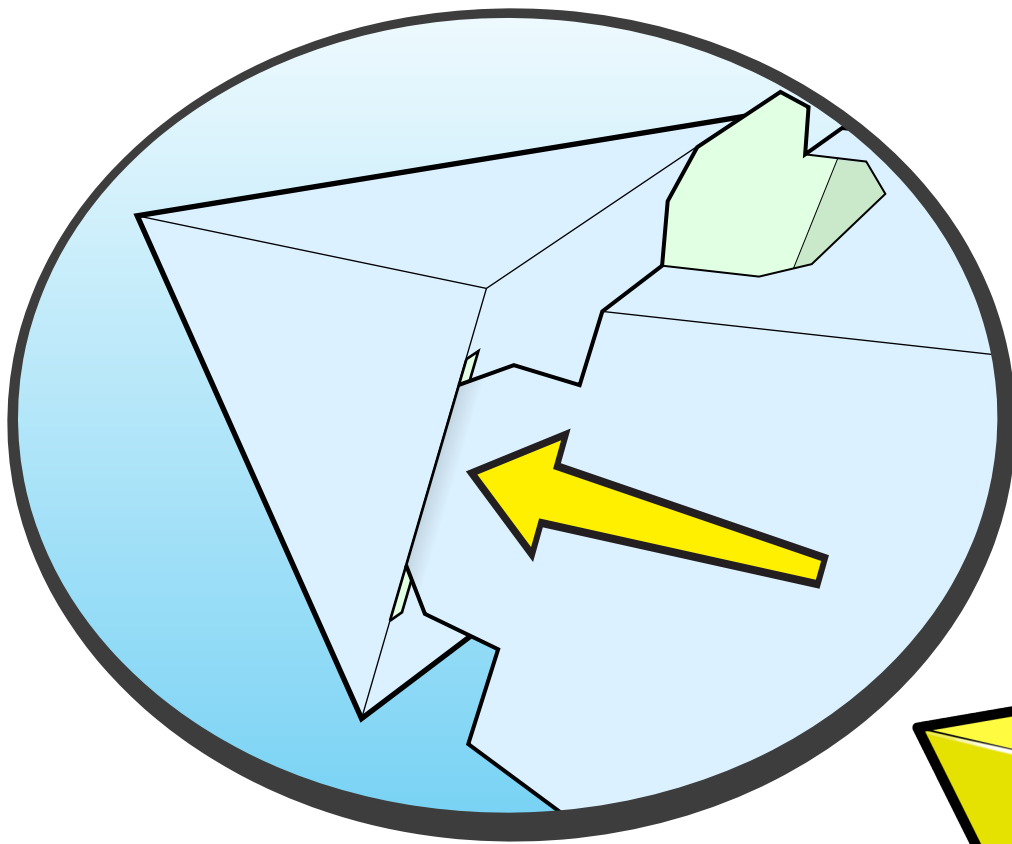
Example of the last 2 steps and the center body.)

Once you glue and attach all the tabs it will create a 3-dimensonal shape that will keep its form. See the illustration as an example for the head.

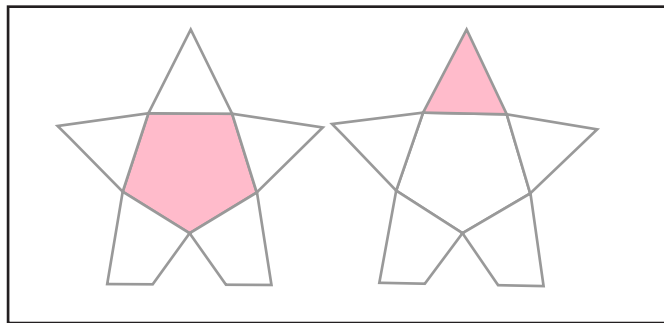
(The other body parts are similar or almost simalar shape to this illustration.)



Head



Once the body parts are glued together from whatever starling series you have chosen, take the inserts from the center body and put them into the open slots. This will keep the pieces from falling out.



(The small marking on the bottom of each body part, will help you indicate where to add that part on the center piece)

Finally when all the pieces are together you have completed building your starling character. You can now play, collect, and decorate them however you want.

